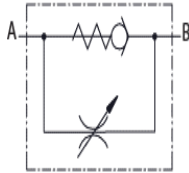


IN-LINE FLOW CONTROL VALVES

FLOW CONTROLS

- CONTROL FLOW IN ONE DIRECTION

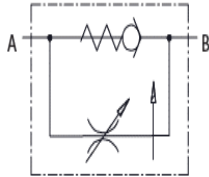
PART NO	PORTS	MAX PSI	MAX GPM
FC-02	1/4 NPT	5000	5
FC-03	3/8 NPT		8
FC-04	1/2 NPT		15
FRU990-03N	1/2 NPT		13
FC-06	3/4 NPT	3000	25



FLOW CONTROL, PRESSURE COMPENSATED

- CONTROL FLOW IN ONE DIRECTION

PART NO	PORTS	MAX PSI	MAX GPM
FRC90-01-SAE6	SAE-06	3625	4.5
FRC90-02-SAE8	SAE-08		



NEEDLE VALVES

- CONTROL FLOW IN BOTH DIRECTIONS

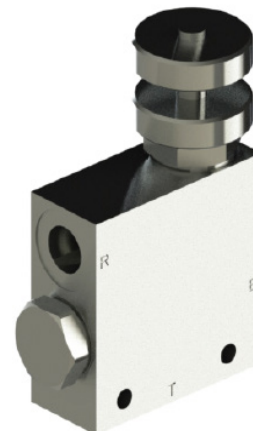
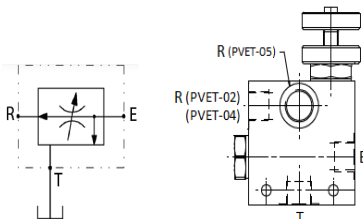
PART NO	PORTS	MAX PSI	MAX GPM
NV-02	1/4 NPT	5000	5
NV-03	3/8 NPT		8
NV-04	1/2 NPT		15
FRB-90-03N	1/2 NPT		13



3 WAYS PRIORITY VALVE, EXCESS TO TANK, WITH KNOB

- 3000 PSI MAXIMUM PRESURE
- PRESSURE COMPENSATED

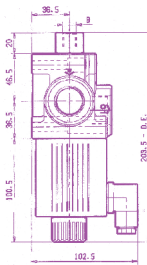
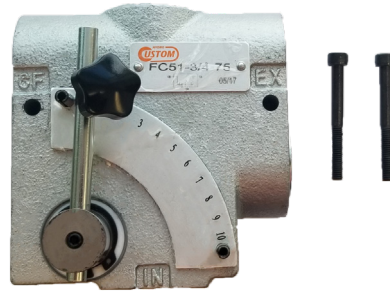
PART NO	MAX GPM		PORTS
	INLET	CONTROL	
PVET-02	10.5	6.5	SAE-08
PVET-04	39	23.5	SAE-12
PVET-05	74	50	SAE-16



3 WAYS PRIORITY VALVE, EXCESS TO TANK, WITH LEVER

- 3000 PSI MAXIMUM PRESURE
- 30 GPM MAXIMUM FLOW

PART NO	EQUIVALENT	PORTS	CONTROL FLOW
W-1950-8	FC51-1/2 37	1/2 NPT	0 - 8 GPM
W-1908-8	FC51-8	SAE-08	
W-1950-16	FC51-1/2	1/2 NPT	0 - 16 GPM
W-1975-30	FC51-3/4	3/4 NPT	0 - 30 GPM
W-1912-30	FC51-12	SAE-12	



MODEL WITH RELIEF			
PART NO	EQUIVALENT	PORTS	CONTROL FLOW
WR-1937-8	FCR51-3/8	3/8 NPT	0 - 8 GPM
WR-1950-16	FCR51-1/2	1/2 NPT	0 - 16 GPM
WR-1975-30	FCR51-3/4	3/4 NPT	0 - 30 GPM
WR-1912-30	FCR51-12	SAE-12	



W, WR & FC MODELS

PART NO		PORTS	CONTROL FLOW
SIDE PORTS	TOP PORTED		
RD-1937-8	RD-137-8	3/8 NPT	0 - 8 GPM
RD-1950-8	RD-150-8	1/2 NPT	
RD-1908-8	RD-108-8	SAE-08	
RD-1950-16	RD-150-16	1/2 NPT	0 - 16 GPM
RD-1975-16	RD-175-16	3/4 NPT	0 - 30 GPM
RD-1975-30	RD-175-30	3/4 NPT	
RD-1912-30	RD-112-30	SAE-12	



RD-1950

MODEL WITH RELIEF			
PART NO		PORTS	CONTROL FLOW
SIDE PORTS	TOP PORTED		
RDRS-1950-16	RDRS-150-16	1/2 NPT	0 - 16 GPM
RDRS-1975-30	RDRS-175-30	3/4 NPT	0 - 30 GPM

